



ENRICH

E- NEWSLETTER

OCT-
DEC
2020
2nd
Edition

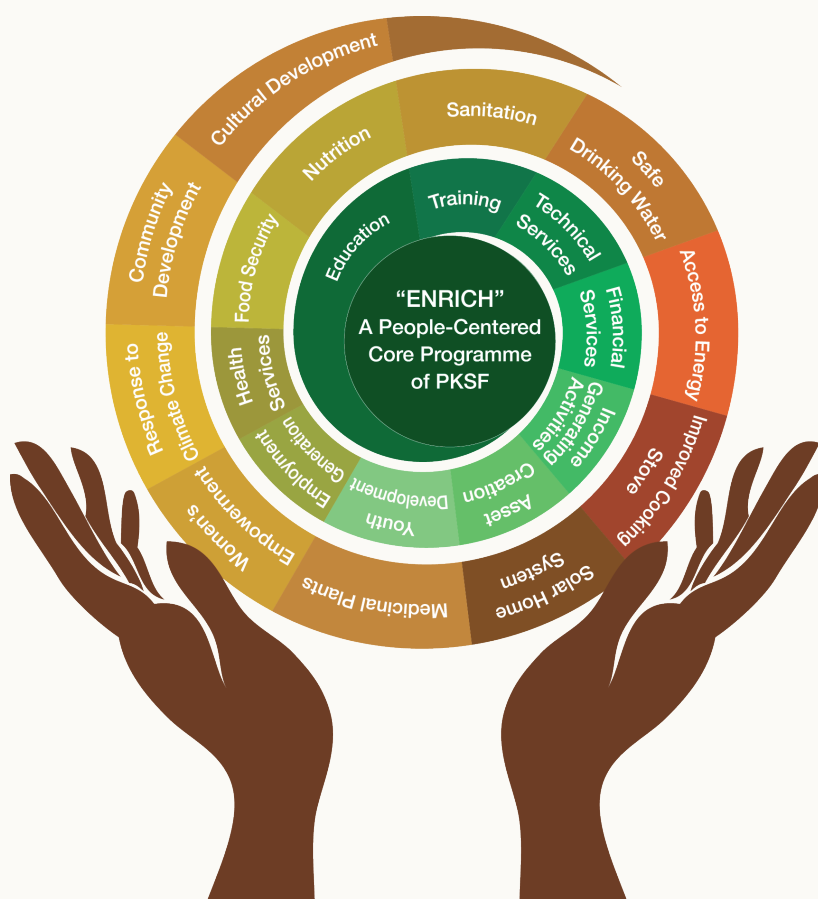
INSIDE THIS ISSUE

'Enhancing Resources and Increasing Capacities of Poor Households towards Elimination of their Poverty (ENRICH)' is a human-centered total development program. The vision of ENRICH is to work with the underprivileged and ensure a dignified living standard for them so that they can enjoy the universal human rights. It is not just a collection of individual projects, rather it is an integrated approach to change the country's poverty scenario in the long run.

- 2 ENRICH: Upholding the spirit of Liberation War by uplifting people's life
- 3 Bangabandhu's Birth Centenary Celebration: ENRICHed youths gearing up for creative contest
- 4 Webinar on Mujib Year celebration by ENRICHed youths
- 5 Case Study: ENRICH changes Anwara's life forever
- 6 Progress of Activities
- 9 Field activities in frames

ENRICH: Upholding the spirit of Liberation War by uplifting people's life

Independence in the traditional sense means an independent territory that has a constitution and is governed by a democratic government, however, a truly independent society is characterized by the economic emancipation of its people who can live a dignified life free from all sorts of exploitation. As the country is on the verge of celebrating its 50th anniversary of independence, the ENRICH program of Palli Karma-Sahayak Foundation (PKSF) has been working relentlessly to realize the three major aspirations of the Liberation War – equality, human dignity, and social justice – by improving the living standard of about six million people of 202 unions in 64 districts across the country. The aspirations were stated in Bangladesh's Proclamation of Independence, a instrument that has been attached to the country's Constitution. The core ambition of ENRICH is to create an enabling environment for the poor people, and as such, to restore their self-confidence by enhancing their capacities and resources. It is an integrated approach that addresses the multidimensional aspects of poverty and attempts to get the most out of the poor people by facilitating the best utilization of their existing resources. PKSF is implementing the program through its 115 partner organizations (POs). The six major intervention areas of ENRICH are: 1. Health, Nutrition & WASH; 2. Education; 3. Skill Development; 4. Financial Assistance; 5. Social Capital Formation; and 6. Environment & Climate Change Adaptation.





Bangabandhu's Birth Centenary Celebration:

ENRICHed youths gearing up for creative contest

To observe the birth centenary of Bangabandhu Sheikh Mujibur Rahman, the Father of the Nation, the ENRICH program of Palli Karma-Sahayak Foundation (PKSF) has launched a creative competition for some 2.5 lakh youths in 202 ENRICH unions across the country. The primary objective of the competition is to revitalize the ideals and philosophy of Bangabandhu as well as the spirit of the Liberation War and patriotism among the young participants.

Bangabandhu, the greatest Bengali of all time, is an epitome of courage and a personification of the principles of freedom and justice. An undaunted advocate of the interests of the Bengalis, Bangabandhu is a hero not only to his countrymen but also to

the peace-loving people from all over the world. In an attempt to reawaken the contribution of the great leader, the ENRICH program has organized the competition under the banner of 'Youth in Development'. The competition is being held in four categories -- writing poems on 'Father of the Nation Bangabandhu Sheikh Mujibur Rahman', writing essays/stories on the theme of 'Bangabandhu and Bangladesh', drawing pictures on the theme of 'The Liberation War and Bangladesh', and contribution of youths (individual/collective) in social development (e.g. infrastructure development, environment and biodiversity conservation, humanitarian assistance etc.)



মুজিব MUJIB
শতবর্ষ 100

Samir
Training
Technical Services
ENRICH
People-Centered Programme
of PKSF
Creating Income
Generating
Empowering
Sustaining

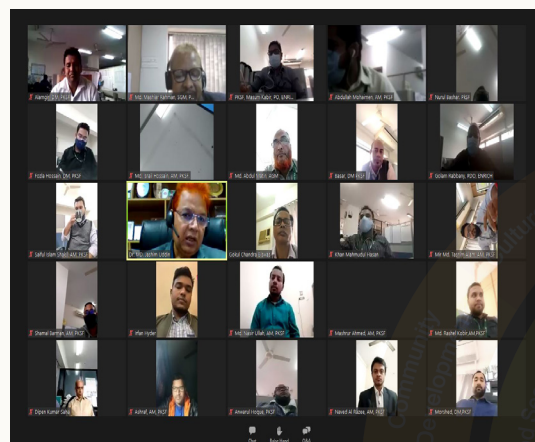
A call for participation was issued on November 20, 2020 and the partner organizations (POs) of PKSF disseminated the information among all the presidents, general secretaries and members of the 2,154 youth committees in ENRICH unions throughout the country. The POs also uploaded the announcement to their respective websites and social media platforms, which sparked a massive response. Participants were requested to submit their works to the office/email addresses of the POs by December 15, 2020. The POs formed a five-member committee by including experts in various categories to evaluate the works of the participants.

Each of the committee nominated a total of eight (top two in each category) works and sent them to the ENRICH unit of PKSF by December 31, 2020. The designated officials at ENRICH unit will further evaluate the works and prepare a list of top ten participants in each category and officially submit it to the PKSF management for authorization. A list of the participants whose works/contributions would be finally selected will be published on PKSF's official website and Facebook page. They will also be awarded with a certificate and a memorial prize.

Webinar on Mujib Year celebration by ENRICHed youths

In order to discuss various issues related to the competition, a webinar was arranged by the ENRICH unit of PKSF on December 16, 2020. Dr. Md. Jashim Uddin, Deputy Managing Director of PKSF, graced the webinar as the chief guest. Around 300 people, including representatives from almost all the POs

in ENRICH unions, took part in the webinar. Dr. Jashim, during his speech, appreciated the youths for their various contribution in societal development, including their efforts to stem the spread of Covid-19 by creating social awareness. He said such a competition would give the youths an opportunity to learn more about Bangabandhu and Bangladesh. He also said that no contemplation about Bangladesh is possible without Bangabandhu as the two entities are inextricably connected. Dr. Jashim suggested that a publication be brought out covering various aspects of the competition and incorporating the finally selected works. He expressed his desire to publish the book before March 17, 2021, the 101st birthday of Bangabandhu, with a view to paying a tribute to the brilliant leader. Representatives from the POs thanked the PKSF management and the ENRICH unit for organizing such a competition, and thus, paving the way for the young generation to know more about the life and works Bangabandhu.



Case Study : ENRICH changes Anwara's life forever

Anwara, a 35-year-old woman and a mother of two from Alawolpur Union in Shariatpur, has become an idol of many for her enviable success in integrated farming. She is currently earning about Tk 15,000 every month from the economic activities conducted in her homestead which has been transformed from a typical house into an ENRICHed home over the last four years. Now she believes that she can bear the expenses of her children's higher studies. But the journey was not very smooth all the way. Anwara had been struggling to make ends meet before she received a loan assistance of Tk 70,000 from the ENRICH program of Palli Karma-Sahayak Foundation (PKSF) in 2017. With no support from her mentally challenged husband, Anwara initially bought a cow and dig a pond with the money. In the next phase, she



took another loan of Tk 30,000 from the ENRICH with which she started cultivating fish and vegetables, and rearing chickens, ducks, and goats. Shariatpur Development Society (SDS), a PKSF partner organization, set up a vermicomposting plant in her house under the ENRICH program and provided her with seeds of various fruits and medicinal plants. Almost all the components of an ENRICHed home can now be found in her house. How the ENRICH program has changed her life can be seen in every nook and cranny of her house. Nowadays, Anwara eyes to expand her farm by taking an adjacent land on lease. To cut a long story short, Anwara now lives a dignified life with no financial uncertainty. She is thankful to the ENRICH program as well as the PKSF for lending her a hand, and thereby ameliorating her life.



Sanitation

Training
Technical
Services

ENRICH"
People-Centered
Programme
of PKSF

Financial
Services

Income
Generating
Activities

Access to Energy

Improv

Progress of activities

October - December 2020 :

‘Enhancing Resources and Increasing Capacities of Poor Households towards Elimination of their Poverty (ENRICH)’ is a human-centered total development approach. ENRICH works in six major intervention areas to establish human dignity by enhancing the capability of the poor people: 1. Health, Nutrition & WASH; 2. Education; 3. Skill Development; 4. Financial Assistance; 5. Social Capital Formation; and 6. Environment & Climate Change Adaptation.

During October-December 2020, ENRICH has provided healthcare services to 1,58,011 people through Static Clinics and Satellite Clinics. Only 593 Satellite Clinics were held during this period with the permission of local administration. Due to the COVID-19 pandemic, arranging Eye Camps and Health Camps remained suspended. There are 365 Health Officers and 2,650 Health Visitors working under ENRICH. Of them, 93 Health Officers and 625 Health Visitors are giving healthcare services to around 1.5 million people through digital healthcare activities under ENRICH.



2. Education

Currently, 1,73,314 students are taken care of in 6,629 Education Assistance Centers in 202 ENRICH Unions. As a result, the drop-out rate at the primary school level in the program areas have come down to 0.06%, while it is about 4-4.5% nationwide. Following the government instructions on the COVID-19 pandemic, ENRICH Education Assistance Centers have remained closed from March 2020. With the permission from local administration 625 schools have been held in this period.



3. Skill Development

a) Youth in Development: Around 2 lakh youths have been organized under this component. Till December 2020, 98,942 youths were provided with a video-based two-day training on self-realization, leadership development and duties of the youth.



b) Training and Job Linkage:

Three new trades--Driving, ICT for Outsourcing, and ICT & MIS for micro-finance--have been introduced to provide technical training to unemployed youths. Till December 2020, 1,131 unemployed youths have been provided with such technical trainings. In this quarter, 15 youths have found employment and 157 others have become self-employed as entrepreneurs.



In the October-December 2020 period, 136 members have deposited Tk 1,04,930. So far, 2,388 members have been paid Tk 3.23 crore as matching grants from PKSF under the Special Savings Scheme.

b) Rehabilitation of Beggars: Beggars are given assets equivalent to Tk 1 lakh so that they can engage in income generating activities and enjoy universal rights. Under this component, 1,322 beggars have been rehabilitated so far.



4. Financial Assistance

a) Special Savings: Under this component, disabled and female-headed ultra-poor families are given a matching grant amount (Tk 20,000 maximum) equal to their two years' savings. They invest the money in different income generating activities.



c) Loan Disbursement: ENRICH offers three types of credit services - Income Generating Activities Loan (IGAL), Livelihood Improvement Loan (LIL), and Asset Creation Loan (ACL). In October-December 2020, a total of Tk 60.01 crore has been disbursed as loans among the ENRICH members.



5. Social Capital Formation

a) **ENRICH center:** ENRICH centers function as community hubs. PKSF provides the construction cost of the centers built on lands donated by local communities. It is managed by an 11-member Ward committee consisting of the local Union Parishad members, senior citizens, local elites, teachers, youths, and representatives of the ENRICH-implementing Partner Organizations (POs). There are now 1,482 ENRICH Centers under operation in the program areas.



b) **Ward Coordination Meeting:** The representatives from local Union Parishads and members of the program gather for a regular meetings in every two months at the ENRICH Centers situated in each Ward. They usually discuss the formation of social capital and review development activities. So far, 47,509 meetings have been held at the ENRICH Centers.

6. Environment & Climate Change Adaptation

a) **ENRICHed Home:** The Program inspires its members to make the best utilization of the existing resources of each household. Thus, a normal home is transformed into an ENRICHed home surrounded with income generating activities and echo-friendly amenities. In October-December, 2020, 45 ENRICHed homes have been developed. A total of 13,673 homes have been transformed into ENRICHed Homes across the country so far.



b) **Bandhu Chula and Solar Home System:** ENRICH inspires echo-friendly and renewable technology. In line with that, improved and echo-friendly special cooking stoves called 'Bandhu Chula' and Solar Home Systems are promoted as an important component. There are 52,097 Bandhu Chulas and 73,128 Solar Home Systems presently being used in the program areas of ENRICH.

Field activities in frames

With proper health safety measures, a health visitor of ENRICH providing healthcare services amid Covid-19 pandemic.



Students taking lessons while maintaining appropriate distancing at an ENRICH education assistance center.

Tree plantation under the youth platform of ENRICH



Bashak cultivation under ENRICH program



An ENRICHed home



A beggar couple rehabilitated under ENRICH

A female member of ENRICH looking after her cattle brought under the Special Savings Scheme of ENRICH



Appropriate loan activities of ENRICH changing people's lives.





Editorial Advisor

Dr. Md. Jashim Uddin
Deputy Managing Director

Editorial Panel

Md. Mashiar Rahman

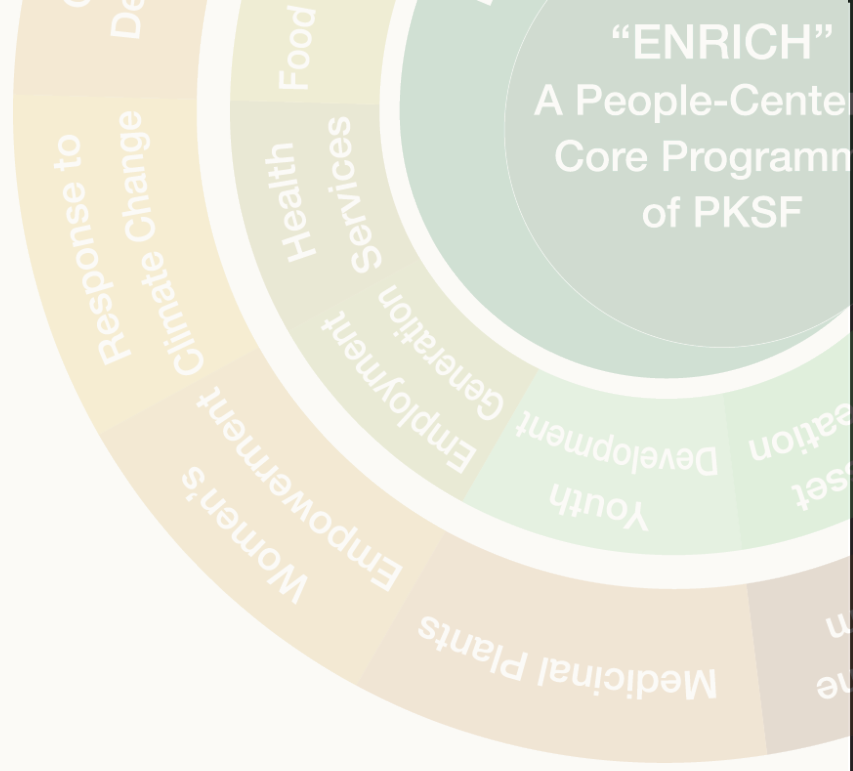
H M Shahariar

Sabuj Chandra Howlader

Photography & Graphics Art

Sabuj Chandra Howlader
ENRICH Archive





ENRICH Program

Palli Karma-Sahayak Foundation (PKSF)

PKSF Bhaban, E-4/B, Agargaon Administrative area,

Sher-E-Bangla Nagar, Dhaka-1207

Phone: 880-2-8181169, Fax: 880-2-8181678

Web : www.pksf-bd.org, facebook.com/PKSF.org

